



F3 Montpellier Crescent, Wallasey, CH45 9JZ Offers In The Region Of £160,000



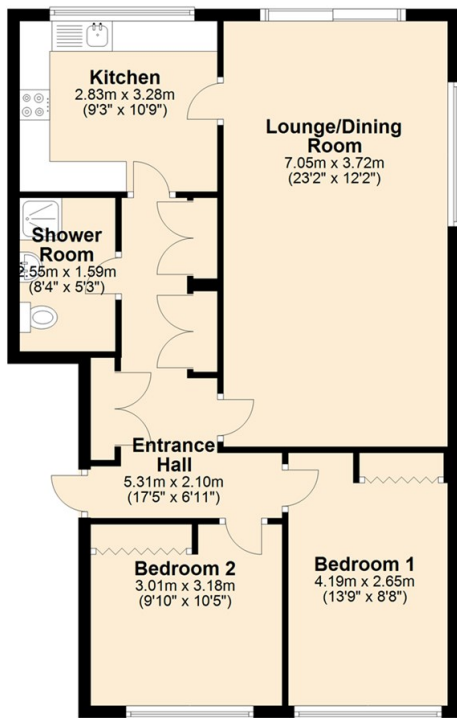
Boasting superb panoramic views over New Brighton coastline, this spacious two bedroom, lift assisted apartment is one to be viewed. The large lounge with big windows and opening to the kitchen is quite impressive! Plenty of storage and a private parking space. Overall the property is in good condition, it would benefit from some modernising but the location and aspect of this property is simply outstanding!

- Two Bedrooms
- First Floor Apartment
- Large Lounge
- Stunning views
- Lift Assisted
- Leasehold Property
- Private Parking
- Great Location

Viewing

To arrange a viewing on this property or require further information please contact one of our team on 0151 638 6313

Ground Floor
Approx. 73.6 sq. metres (792.3 sq. feet)



Total area: approx. 73.6 sq. metres (792.3 sq. feet)
This floorplan has been designed and completed by Bakewell & Horner.
Plan produced using PlanUp.



Energy Efficiency Rating		
	Current	Potential
Vary energy efficient - lower running costs		
(92 plus) A		
(81-91) B		
(69-80) C		
(55-68) D		
(39-54) E		
(21-38) F		
(1-20) G		
Not energy efficient - higher running costs		
England & Wales		EU Directive 2002/91/EC



These particulars, whilst believed to be accurate are set out as a general outline only for guidance and do not constitute any part of an offer or contract. Intending purchasers should not rely on them as statements of representation of fact, but must satisfy themselves by inspection or otherwise as to their accuracy. No person in this firms employment has the authority to make or give any representation or warranty in respect of the property.